



BME
240

**Join BME
where
new discoveries await you !**



Gellért Szarvas
Erasmus Coordinator
Budapest University of Technology and Economics (BME)

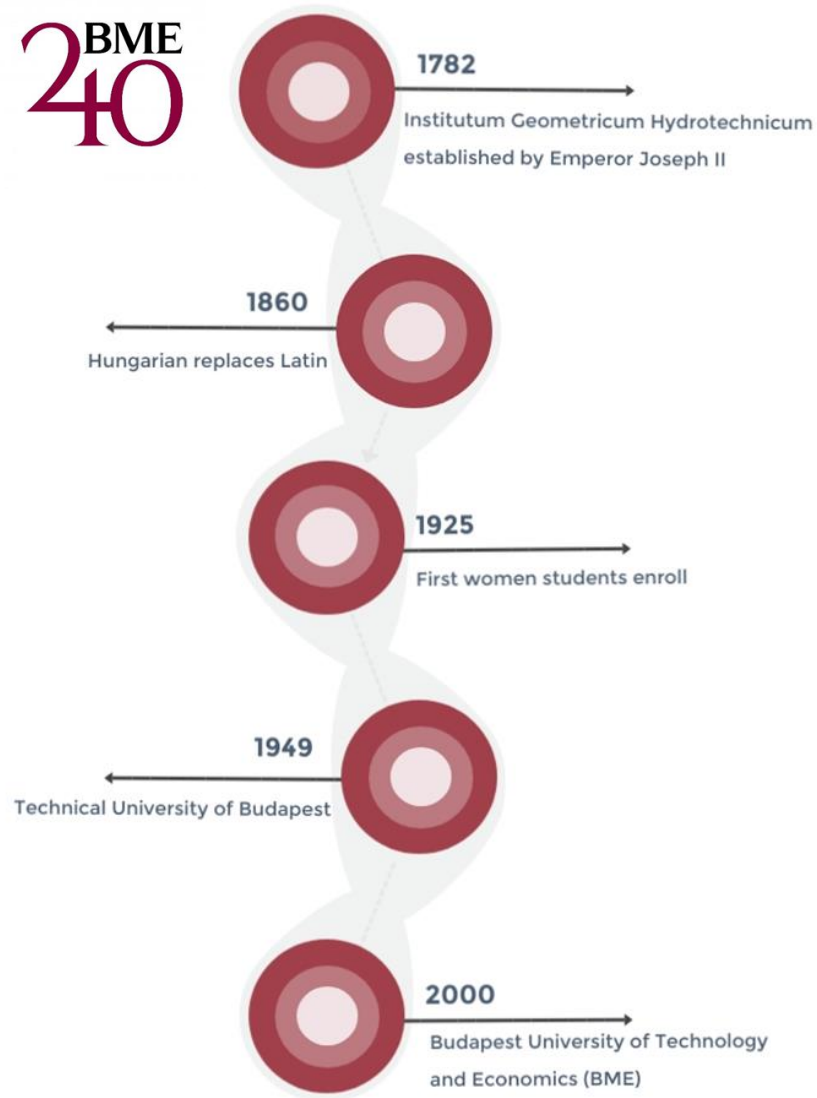






A HISTORICAL TIMELINE

BME
240



BME IN NUMBERS

8 faculties



1.300 academic staff

800 with PhD/DLA

70 departments



23.000 students

2.200 international students

FACULTIES



Faculty of Civil Engineering (1782)



Faculty of Mechanical Engineering (1871)



Faculty of Architecture (1873)



Faculty of Chemical Technology and Biotechnology (1873)



Faculty of Electrical Engineering and Informatics (1949)



Faculty of Transportation and Vehicle Engineering (1951)



Faculty of Natural Sciences (1998)



Faculty of Economic and Social Sciences (1998)

NOBEL LAUREATES GRADUATED FROM BME



Dénes (Dennis) GÁBOR (1900 – 1979)
holography in 1971

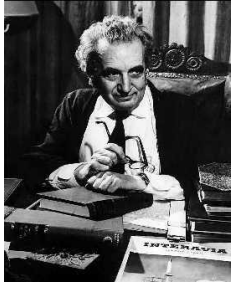


Jenő (Eugene) WIGNER (1902 – 1995)
theoretical physics in 1963



György (George) OLÁH (1927– 2017)
organic chemistry in 1994

WORLD FAMOUS ALUMNI



Theodore von KÁRMÁN
Aeronautics & Mathematics
(1881–1963)



Leo SZILÁRD
Nuclear chain
reaction
(1898–1964)



Donát BÁNKI
Carburetor
(1859 – 1922)

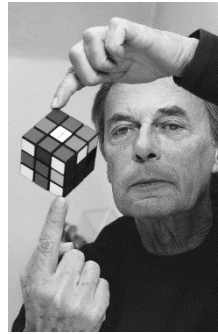


Ede TELLER
Hydrogen bomb
(1908– 2004)

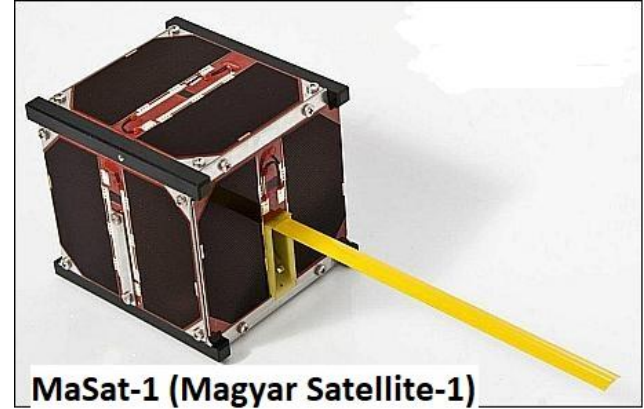


Károly ZIPERNOWSKY
Transformer
(1853–1942)

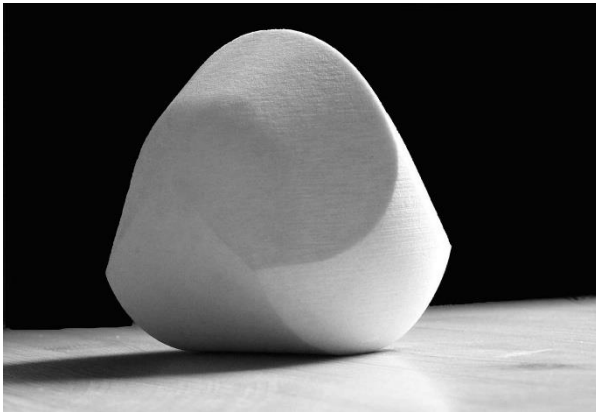
FAMOUS INVENTIONS



Ernő RUBIK
(1944-)



MaSat-1 (Magyar Satellite-1)



Lifeboat – always stands back up if falling over

EDUCATION AT BME

- ❑ Engineering education:
 - BSc programs (7-8 semesters)
 - MSc programs (3-4 semesters)
 - PhD Programs in 12 doctoral schools (2+2 years)
- ❑ Full BSc, MSc and PhD curricula both in Hungarian and English
- ❑ Continuing Engineering Education, postgraduate courses, MBA, etc.
- ❑ Scholarship: Stipendium Hungaricum

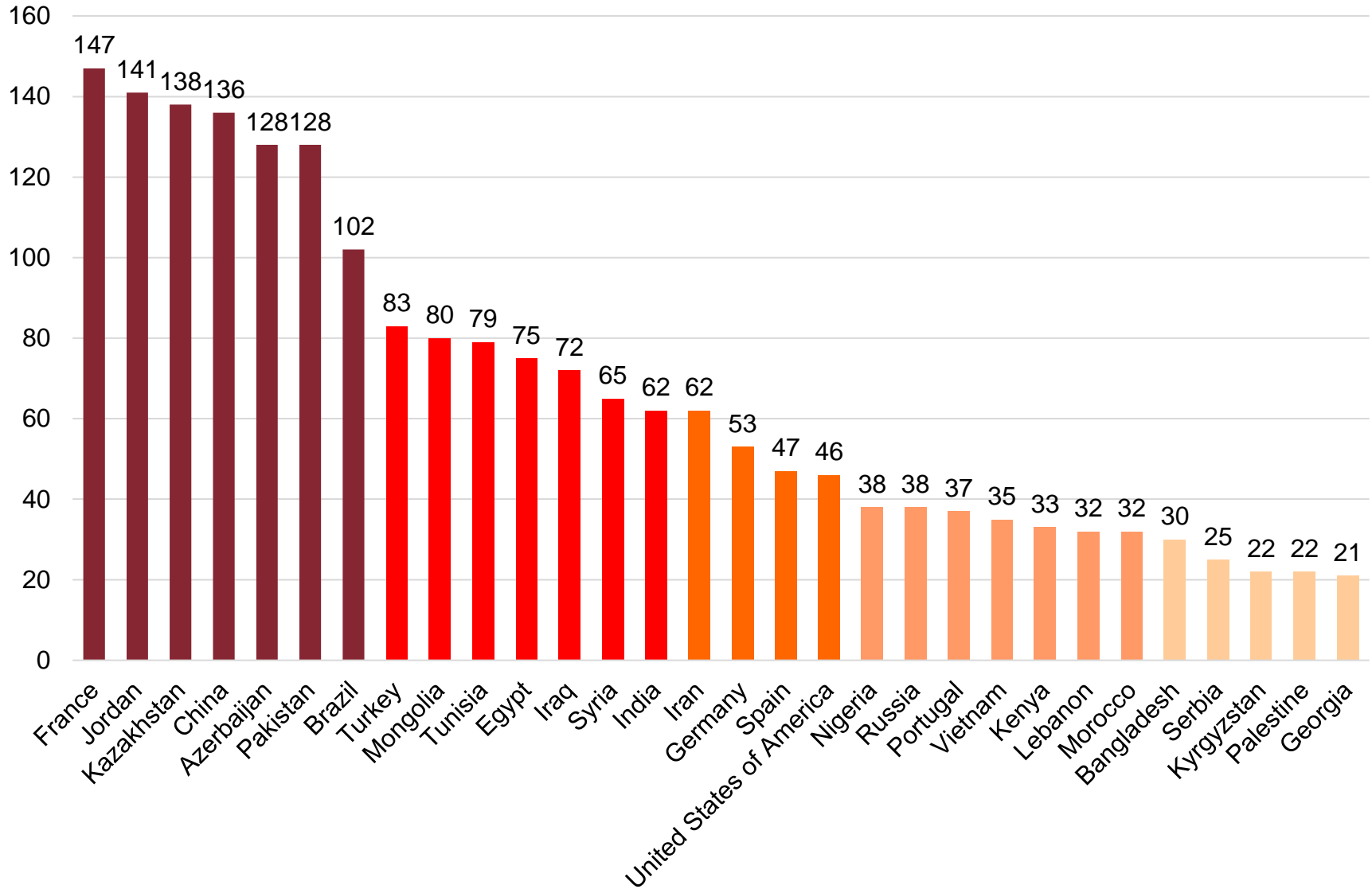
STUDENT EXCHANGE AT BME

- ❑ Part time: 1 or 2 semesters
- ❑ Erasmus+ programme or Freemovers
- ❑ Great experience for a short time
- ❑ Various study fields in 8 faculties
- ❑ Deadlines:
 - ✓ Fall semester: 15 May
 - ✓ Spring semester: 30 November



www.bme.hu/?language=en

INTERNATIONAL STUDENTS AT BME





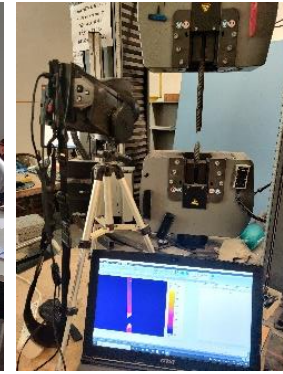
STUDYING IN BME



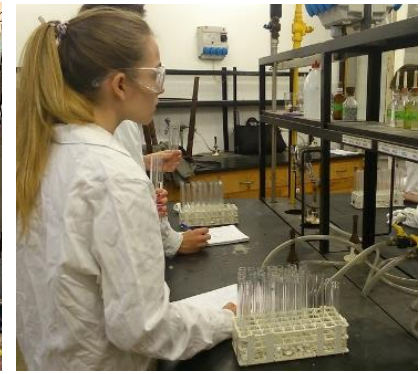
Plenary lectures



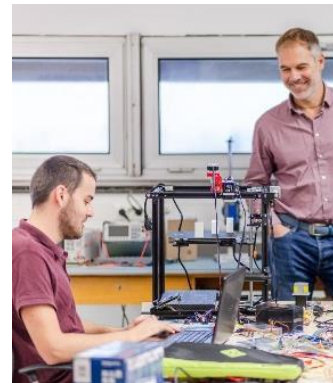
Seminars



Laboratories, hands-on experiences



Free hand drawing – digital planning



Modern technologies and innovative solutions



RANKINGS

ACADEMIC RANKING OF WORLD UNIVERSITIES (BME 801-900)

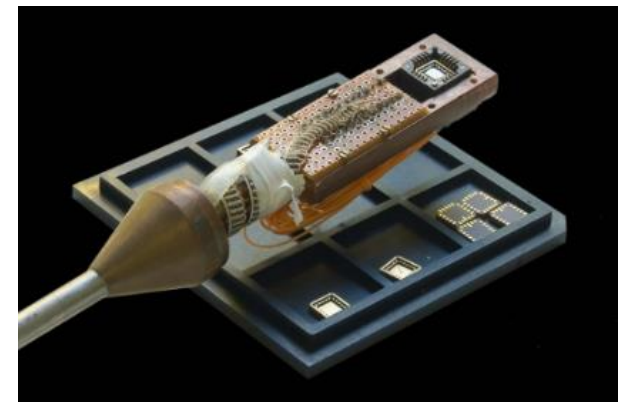
- ❑ Mechanical Engineering (201-300)
- ❑ Faculty of Natural Sciences – Mathematics (301-400)

QS MAIN RANKING (BME 801-1000)

- ❑ Engineering - Mechanical, Aeronautical & Manufacturing (201-250)
- ❑ Material Science (351-400)
- ❑ Chemistry (351-400)
- ❑ Broad subject area: Engineering and Technology (273)

BME AS A RESEARCH UNIVERSITY – STRATEGIC RESEARCH AREAS

- ❑ Artificial Intelligence, smart cities, robotics
- ❑ Intelligent environment and e-technologies
- ❑ Sustainable energy
- ❑ Vehicle technology, autonomous driving, transportation and logistics
- ❑ Biotechnology, health and environment protection
- ❑ Nanophysics, nanotechnology and materials science
- ❑ Disaster prevention: modern engineering methods



INTERNATIONAL COLLABORATIONS



DAIMLER



Morgan Stanley



SIEMENS



INDUSTRY-FUNDED LABS

Ericsson High Speed Net Lab



Nokia Traffic Lab



**BME Morgan Stanley
Financial Innovation Lab**



Industrial research carried out at the university: participation in cutting edge R&I activities

HR objectives for the company: talented students (talents proven by the project involvement) are employed after the degree

STUDENT LIFE IN BME



BME University Festival



BME Sport centre



Choir



Szkéné theatre



Student circles



Canoe on the Danube



BME Formula Racing Team



Field trips



Thank you for your attention!

BME
240



www.bme.hu